

# HIGH DENSITY VGA USB KVM MATRIX SWITCH

Up to four users can control 32 USB computers



UNIMUX-4X8-UHDUC5 (Front and Back)

## Available Options:

- **USB connector for touchscreen, CAC reader, SMART Board™, or other device.**
- **Extender port for connecting remote users 300 feet away via CAT5.**

## Features & Applications

The UNIMUX™ High Density VGA USB KVM Matrix Switch allows up to four users to individually command or simultaneously share up to 32 USB computers. Access USB computers (PC, SUN, and MAC) using USB keyboards and mice, and VGA multiscan monitors.

USB host computers and USB devices can be hot-plugged or removed at any time. Allows any USB device (keyboard and/or mouse) to control any attached USB host computer.

- The High Density Switch saves rack space.
  - The 2x8, 2x16 and 4x8 switches are 1RU in height.
  - The 2x32, 4x16 and 4x32 switches are 2RU in height.
- Features NTI's patented true autoboot USB switching - all attached USB PCs, MACs and SUNs can be booted simultaneously.
- Compatible with USB computers (PC, SUN, MAC).
- Cascade UNIMUX switches off a single master switch to control up to 256 computers as if from one switch.
- High quality construction.
- Crisp and clear 1920x1200 video resolution.
- Equipped with OSD, Liquid Crystal Display, and RS232.
- Dedicated microprocessors prevent computers from locking up, ensuring reliable control.
- Computers can be shared or used exclusively.
- Fully compliant with USB 1.1 standards.
- Supports international keyboard layouts in auto-detection mode.
- Cabling runs are simplified with NTI's high density KVM switch cables.
- Optional support for USB 1.1 devices, in addition to keyboards and mice, such as a USB touch screen monitors, SMART Board™ Interactive Whiteboards, or CAC card readers.
  - Additional USB device must be the same for each user.
- Optional extender ports for locating remote users up to 300 feet via CAT5/5e/6 cable.
  - 2-port models feature one local user and one remote user ports.
  - 4-port models feature two local user and two remote user ports.
  - For switches with the additional USB port option, the remote user does not have access to the extra USB device.

## Specifications

### Hosts

- Female 15-pin HD connectors.
- Supports USB computers with VGA video.
- Multiplatform support: Windows 2000/XP/Vista/Server 2000/2003/2008, Solaris, Linux, FreeBSD, and MAC OS 9/10.
- Any legacy PS/2 or SUN computer can be connected by using a USB-PS2-R or USB-SUN-R adapter.

### Monitor

- Crisp and clear 1920x1200 resolution.
- Female 15-pin HD connectors.
- A multiscan VGA monitor is required to display the different video outputs from different platforms.
- Bandwidth is 150 MHz.

### Devices

- Female USB Type A connectors.
- Keyboard and mouse are hot-pluggable.
- Available with optional female USB Type A connectors for additional USB 1.1 devices.
  - Use to connect USB touch screen monitors, CAC card reader, SMART Board™, or other USB devices.

### Power

- 110 or 220 VAC at 50 or 60 Hz via IEC connector.

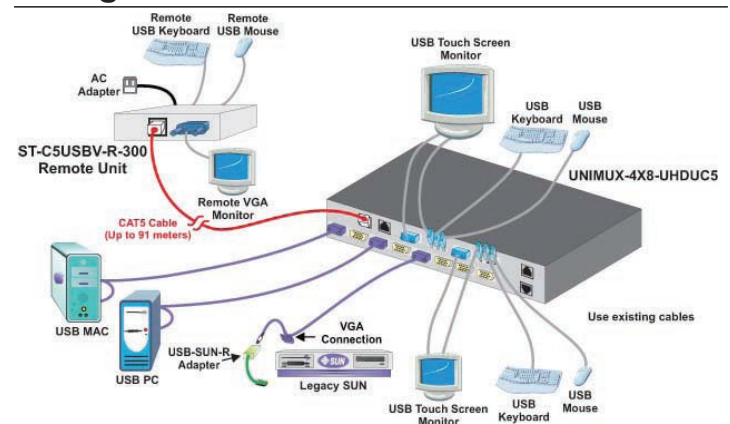
### Regulatory Approvals

- CE, RoHS

### Environmental

- Operating temperature: 32°F to 100°F (0°C to 38°C)
- Storage temperature: -20°F to 140°F (-30°C to 60°C)
- Operating and Storage Relative Humidity: 17 to 90% non-condensing RH.

## Configuration and Cable Illustration



# HIGH DENSITY VGA USB KVM MATRIX SWITCH

Up to four users can control 32 USB computers

## Control Methods

### Keyboard

- Use the keyboard to command the switch to select ports or configure the **Scan, Sharing** and **Broadcast Modes**.
  - **Normal Operating Mode** allows the user to directly operate the selected computer with a transparent presence of the NTI switch.
  - **Sharing Mode** allows users to share the same computer.
  - **Command Mode** allows the user to give instructions to the switch through their keyboard. Keystrokes are not passed to the computer.
  - **Scan Mode** feature causes the switch to automatically and sequentially display the video from each selected powered on computer for a duration of 2-255 seconds (programmable by the user).
  - **Broadcast Mode** allows the user's keystrokes to be sent to all selected powered on computers.

### RS232 Control

- Female RJ45 connector.
- Baud rate 1200 to 115200.
- Address up to 15 units, all of which can be daisy-chained and controlled by one serial port.

### Commands

- CS – causes one INx/OUTx connection to occur.
- CA – causes all inputs to connect to specified output.
- RO – reads what input is connected to specified output.
- RU – reads size of matrix, reports number of inputs and number of outputs on specified switch.

### Front Panel Interface

- Locally change ports with front panel buttons.
- Use front panel buttons to navigate through LCD screens and execute actions.
- LCD indicates currently selected port for each user.
  - Change baud rates for RS232.

### On Screen Display (OSD)

- Select computers by name with the On Screen Display (OSD)
- Use keyboard or mouse to operate the switch from menus superimposed onto the monitor.
- Power status of each computer is displayed.
- View usage statistics - power-on cycles and hours of usage.
- Names can be up to 12 characters long.
- Shows names of computers on cascaded switches up to 256 ports.
- Modify the size and position of the OSD.
- Help screens assist users with the OSD.
- OS- and software-independent.
- OSD is built into the switch - no need to install additional hardware or software.

### Security

- Advanced security included.
- Each user password can be up to 15 characters long, and each switch can store up to 63 users.
- Administrator can enable or disable all security features and select which computers each user can access.
- Once security is enabled, a user or administrator must login in order to access any of the computers connected to the switch.

## Ordering Specifications

This example explains the NTI part number by breaking it down into the available options. When ordering, choose the options that you require

Number of Users      Number of CPUs      Universal KVM Switch      High Density      Optional USB Port      Optional Extender Port  
**UNIMUX - n X m - U HD U C5**

### High Density VGA USB KVM Matrix Switch Models

NTI Part #	# of Users (n)	# of CPUs (m)	Rack Units	Rack Size WxDxH (in)
UNIMUX-2X8-UHD	2	8	1RU	19x10x1.75
UNIMUX-2X16-UHD	2	16	1RU	19x10x1.75
UNIMUX-2X32-UHD	2	32	2RU	19x10x3.5
UNIMUX-4X8-UHD	4	8	1RU	19x10x1.75
UNIMUX-4X16-UHD	4	16	2RU	19x10x3.5
UNIMUX-4X32-UHD	4	32	2RU	19x10x3.5

### Cables

- Interface cables between your computers and the switch are required for proper operation. Use HDUSBVEXT-xx-MM to connect computers to the switch.
- Cables not included.

### USB KVM Receiver (Remote Unit) For use with switch with extender port option

NTI Part #	Maximum Extension (ft.)	Dimensions WxDxH (in.)
ST-C5USBV-R-300	300	3.5x3.1x1.3



330.562.1999  
Worldwide fax



sales@ntigo.com



www.networktechinc.com

© 1997, 2009 NTI  
All rights reserved